

# West Burton Solar Project

## Environmental Statement

### Figure 8.18.3: Landscape and Ecology Mitigation and Enhancement Measures West Burton 3

### Revision A

Prepared by: Island Green Power

~~March~~November 2023

PINS reference: EN010132

Document reference: APPEX1/WB6.4.8.18.3 A

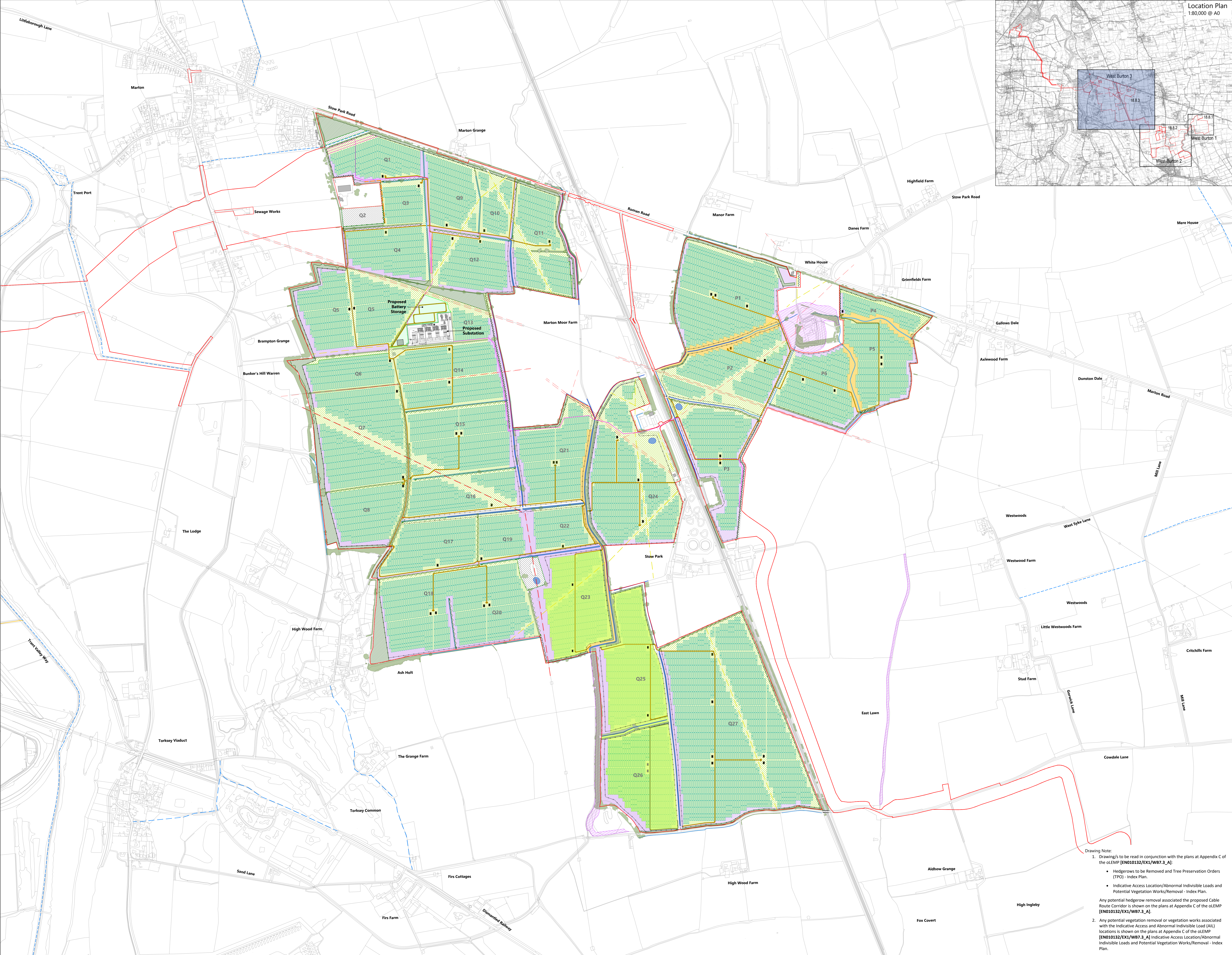
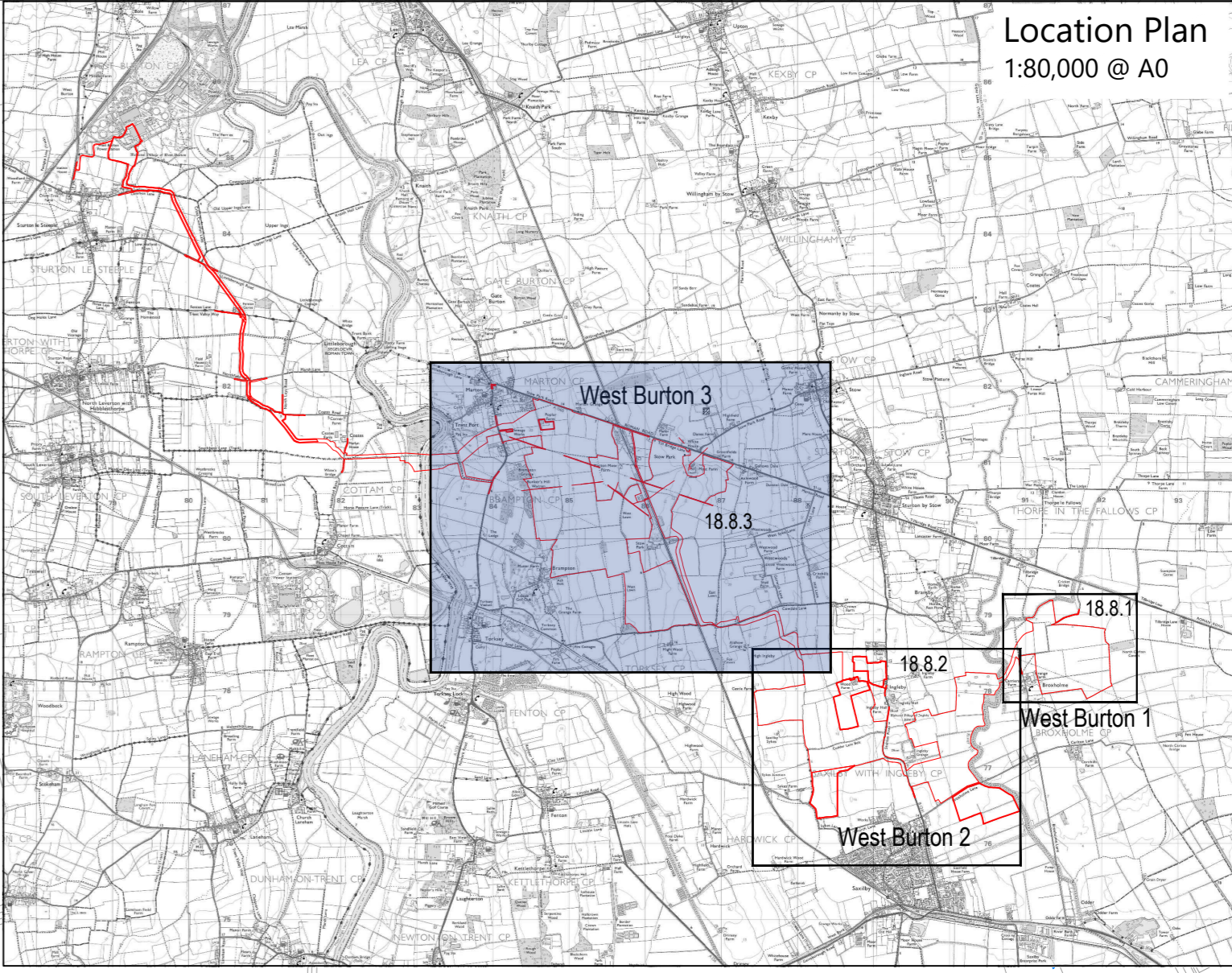
APFP Regulation 5(2)(a)



## Schedule of Changes

Figure Reference	Page	Description of Changes	Reason for Revision
<a href="#">WB6.4.8.18.3_A</a>	<a href="#">3</a>	<p><a href="#">Change to spelling of 'enhancement'.</a></p> <p><a href="#">Amend the wording of hedgerow removal in the key from 'Existing hedge to be removed' to 'Existing hedge to be removed permanently'.</a></p> <p><a href="#">Offset calculations from drains.</a></p> <p><a href="#">Changes to hedgerow removal locations.</a></p> <p><a href="#">Changes to proposed woodland planting.</a></p>	<p><a href="#">To correct a typo.</a></p> <p><a href="#">For clarity.</a></p> <p><a href="#">For clarity.s</a></p> <p><a href="#">For clarity.</a></p> <p><a href="#">In response to changes to proposed cable route and tracks</a></p>





**Key**

- Site Boundary
- Soft Landscape**
  - Existing tree canopy
  - Existing hedge to be retained
  - Existing hedge to be removed permanently
  - Existing hedge reinforced with irregularly spaced native tree planting
  - Proposed native hedge with irregularly spaced hedgerow trees
  - Proposed native shelter belt / woodland planting
  - Proposed native scattered trees
  - Proposed diverse meadow mix (in reference to biodiversity opportunity mapping)
  - Proposed long term meadow creation
  - Proposed flower rich pollinator mix
  - Proposed tall herb mix
  - Proposed tussock mix
  - Proposed successional scrub
  - Proposed bird mitigation
  - Existing ditches (Not IDB)
  - Existing IDB ditch
  - Existing water body
  - Proposed Wildlife pond
- Infrastructure**
  - Existing overhead power lines
  - Existing underground services
  - Proposed cable route
  - Proposed internal access tracks
  - Proposed solar panels
  - Proposed inverter
  - Proposed post and wire fencing
  - Proposed opaque fence (required for fixed tables only in accordance with the Glint and Glare chapter [EN010133/APP/WB6.2.16])
- Landscape Designations and Constraints**
  - Public Right of Way
  - Scheduled Monument

Drawing Note:

- Drawing/s to be read in conjunction with the plans at Appendix C of the oLEMP [EN010132/EX1/WB7.3\_A]:
  - Hedgerows to be Removed and Tree Preservation Orders (TPO) - Index Plan.
  - Indicative Access Location/Abnormal Invisibles Loads and Potential Vegetation Works/Removal - Index Plan.
 Any potential hedgerow removal associated the proposed Cable Route Corridor is shown on the plans at Appendix C of the oLEMP [EN010132/EX1/WB7.3\_A].
- Any potential vegetation removal or vegetation works associated with the Indicative Access and Abnormal Invisibles Load (AIL) locations is shown on the plans at Appendix C of the oLEMP [EN010132/EX1/WB7.3\_A] Indicative Access Location/Abnormal Invisibles Loads and Potential Vegetation Works/Removal - Index Plan.

